

## African Lion (*Panthera leo krugeri*)

Diet: A typical diet will include zebra, giraffe, buffalo, wildebeest, gazelles and impala. Lions are opportunistic and will readily scavenge the kills of cheetahs, leopards, wild dogs and hyenas.



Wt. 400 lbs

Formula = lbs \* 15 kCal/day

## Grey's Zebra (*Equus grevyi*)

Diet: The zebra, though water dependent, is a very adaptable grazer, able to eat both short young shoots and long flowering grasses.



Wt. 500 lbs

Formula = lbs \* 15 kCal/day

## Przewalski's Wild Horse (*Equus caballus przewalskii*)

Diet: Przewalski's horses eat grasses and other vegetation.



Wt. 1,500 lbs

Formula = lbs \* 15 kCal/day

## Reticulated Giraffe (*Giraffa camelopardalis*)

Diet: Giraffes are highly selective feeders, the bulk of their diet comprising the leaves and shoots of trees and shrubs, supplemented by climbers, vines and some herbs.



Wt. 2,600 lbs

Formula = lbs \* 15 kCal/day

### West Caucasian Tur (*Capra caucasica*)

Diet: Grasses, including sweet vernal grass, foxtail, mountain fescue, and meadow grass



Wt. 90 lbs

Formula = lbs \* 15 kCal/day

### Western Lowland Gorilla (*Gorilla gorilla gorilla*)

Diet: This subspecies consumes parts of at least 97 plant species. About 67% of their diet is fruit, 17% is leaves, seeds and stems and 3% is termites and caterpillars.



Wt. 400 lbs

Formula = lbs \* 15 kCal/day

### American Alligator (*Alligator mississippiensis*)

Diet: The American alligator is a carnivore. It eats fish, turtles, snakes, small mammals and carrion.



Wt. 400 lbs

Formula = lbs \* 15 / 10 kCal/day

### European Mouflon Sheep (*Ovis ammon musimon*)

Diet: Grass, weeds and shrubs.



Wt. 100 lbs

Formula = lbs \* 15 kCal/day

### White-Tailed Deer (*Odocoileus virginianus*)

Diet: It eats green plants in the spring and summer. In the fall, it eats corn, acorns and other nuts. In the winter, it eats the buds and twigs of woody plants.



Wt. 75 lbs

Formula = lbs \* 30 kCal/day

### Saiga Antelope (*Saiga tatarica*)

Diet: Saiga antelopes are herbivores, grazing on over 100 different plant species; however, the most important are grasses and herbs.



Wt. 75lbs

Formula = lbs \* 30 kCal/day

### Alligator Snapping Turtle (*Macrolemys temminckii*)

Diet: Consists primarily of fish and dead fish carcasses



Wt. 400 lbs

Formula = lbs \* 30 / 10 kCal/day

### Bush Pig (*Potamochoerus porcus*)

Diet: Seasonal and variable, consisting mainly of roots, tubers (like potatoes and cassava), bulbs, berries and fruits. They also eat fungi.

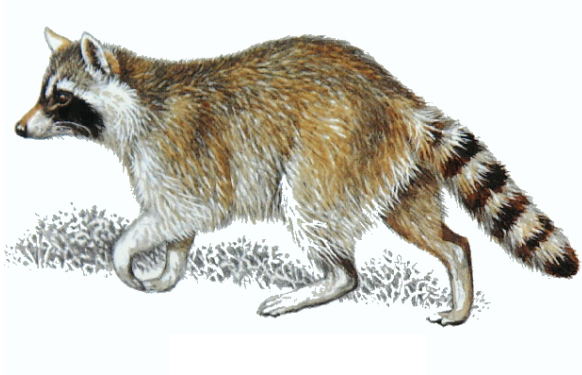


Wt. 200 lbs

Formula = lbs \* 15 kCal/day

### Raccoon (*Procyon lotor*)

Diet: They will eat fruit, berries, grain, eggs, poultry, vegetables, nuts, mollusks, fish, insects, rodents,



Wt. 30 lbs

Formula = lbs \* 30 kCal/day

### Common Porcupine (*Erethizon dorsatum*)

Diet: The common *porcupine* is an herbivore. It eats leaves, twigs and green plants like skunk cabbage and clover.



Wt. 20 lbs

Formula = lbs \* 30 kCal/day

### Mexican Grey Wolf (*Canis lupus baileyi*)

Diet: These *carnivores* (meat eating) eat anything ranging from field mice to huge caribou.



Wt. 75 lbs

Formula = lbs \* 30 kCal/day

### Coyote (*Canis latrans*)

Diet: A coyotes' main diet consists of mice, rats, insects, rabbits, etc.



Wt. 40 lbs

Formula = lbs \* 30 kCal/day

### Gray-Collared Chipmunk (*Tamias cinereicollis*)

Diet: A chipmunk will eat a wide variety of food. Its favorites are nuts, small seeds, berries and fruit.



Wt. 5.0 oz

Formula = oz \* 10 kCal/day

### Long Tailed Weasel (*Mustela frenata*)

Diet: The long-tailed weasel is a carnivore. Most of its diet is made up of small mammals like mice, voles, rabbits, gophers and chipmunks. It will occasionally eat birds and insects.



Wt. 7.0 oz

Formula = oz \* 10 kCal/day

### Leaf-Tailed Gecko (*Uroplatus henkeli*)

Diet: Geckos eat insects and sometimes small mice.



Wt. 3.0 oz

Formula = oz \* 10 / 10 kCal/day

### Black Rat (*Rattus rattus*)

Diet: typically includes seeds, nuts, grains, vegetables, and fruits.



Wt. 1.0 lbs

Formula = lbs \* 45 kCal/day

### African Bullfrog (*Pyxicephalus edulis*)

Diet: The African bullfrog is carnivorous. It will feed on anything it can fit into its mouth; including insects, small rodents (such as mice), reptiles,



Wt. 1.0 lbs      Formula = lbs \* 45 / 10 kCal/day

### Ornate Box Turtle (*Terrapene ornata ornata*)

Diet: Includes: slugs, snails, worms, grubs, caterpillars, beetles, pill bugs, sow bugs, centipedes, crickets, grasshoppers, spiders, flies, crawfish and carrion. They also eat plant matter a large part of which is fungi (mushrooms etc). Moss, berries and grass are also eaten.



Wt. 2.0 lbs      Formula = lbs \* 45 / 10 kCal/day

### Tricolor Squirrel (*Callosciurus prevosti*)

Diet: consists of seeds, nuts, fruit, flowers, and other plant matter.



Wt. 1.6 lbs      Formula = lbs \* 45 kCal/day

### Grey Fox (*Urocyon cinereoargenteus*)

Diet: A large part of its diet is made up of small mammals like mice, voles and eastern cottontail rabbits. It also eats birds; insects; and plants like corn, apples, nuts, berries and grass.



Wt. 15 lbs      Formula = lbs \* 40 kCal/day

### Muskrat (*Ondatra zibethicus*)

Diet: Primarily aquatic plants including cattails, arrowheads, and duckweeds.



Wt. 5.0 lbs

Formula = lbs \* 40 kCal/day

### Bornean Bay Cat (*Felis badia*)

Diet: Said to feed on small mammals, birds, monkeys and carrion



Wt. 7lbs

Formula = lbs \* 40 kCal/day

### Amami Rabbit (*Pentalagus furnessi*)

Diet: Its food includes bamboo shoots, berries and the leaves and stems of sweet potatoes



Wt. 9 lbs

Formula = lbs \* 40 kCal/day

### Madagascar Leaf-Nosed Snake (*Langaha nasuta*)

Diet: Insects and small lizards.



Wt. 1.0 lbs

Formula = lbs \* 40 / 10 kCal/day

### Golden Mouse (*Ochrotomys nuttalli*)

Diet: Plant matter such as seeds, fruits and leaves.



Wt. 1.0 oz

Formula = oz \* 10 kCal/day

### Vampire bat (*Desmodus rotundus*)

Diet: The common vampire bat feeds mostly on the blood of mammals



Wt. 1.75 oz

Formula = oz \* 10 kCal/day

### Rock Elephant Shrew (*Elephantulus myurus*)

Diet: the rock elephant shrew is primarily an insectivore though it may also feed on some plant material



Wt. 2.0 oz

Formula = oz \* 10 kCal/day

### Red-Spotted Newt (*Notophthalmus viridescens*)

Diet: mainly bugs like insects, worms, spiders, snails and slugs.



Wt. 1.0 oz

Formula = oz \* 10 / 10 kCal/day